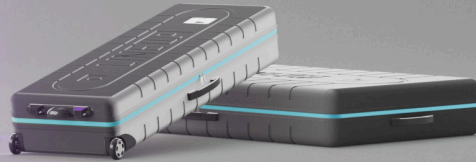




# LINEUP SCREEN



Powered by **DIGIUP**



## LINEUP screen 200

– Powered by DIGIUP



The LINEUP Screen combines digital signage with a LINEUP frame featuring integrated RGB frame lighting. The display is designed for continuous operation and achieves a brightness of up to 700 nits. With optional fabric covering on the back, the LINEUP Screen impresses from every angle and becomes an eye-catcher from any perspective.

### ■ Tool-Free Assembly

The patented V-Lock closure system connects the LINEUP frame components in seconds — no tools required. Two integrated handles on the screen ensure safe handling during setup and transport. Frame and display are powered through a single cable, with power distribution to the display running directly through the frame.

### ■ Safe Transport

Robust ABS cases with wheels and individually shaped foam inserts protect all components reliably during transport.

### ■ Premium Material

Silver anodized aluminum profiles with 80 mm depth form the load-bearing structure of the frame.

### ■ Size & Format

Product dimensions: 73 x 203,5 x 50 cm  
Frame format: 73 x 200 cm

### ■ DIGIUP-Display

The display is designed for 24/7 operation and reaches a brightness of up to 700 nits. A 3 mm toughened glass panel reliably protects the screen from mechanical impact. Content can be transferred via USB or through an online content management system.

### ■ RGB-Backlighting

The wireless RGB LED modules produce over 16 million colors and can be controlled via remote — enabling flexible color changes without additional cabling.

### ■ Fabric-Ready Frame

The frame can be fitted with fabric on both sides. The printed fabric graphic communicates additional brand messages and ensures a clean, professional look from both sides — no visible cables or connectors.

### ■ Compatible with LINEUP Products

The LINEUP Screen integrates seamlessly with other products in the LINEUP series, creating a cohesive, unified appearance across your entire trade show presence.